



# MONTHLY MEMBERSHIP PROGRESS REPORT

District 26 M3

Results as of: 02/28/2019

GMT: GREGORY GILLIAM

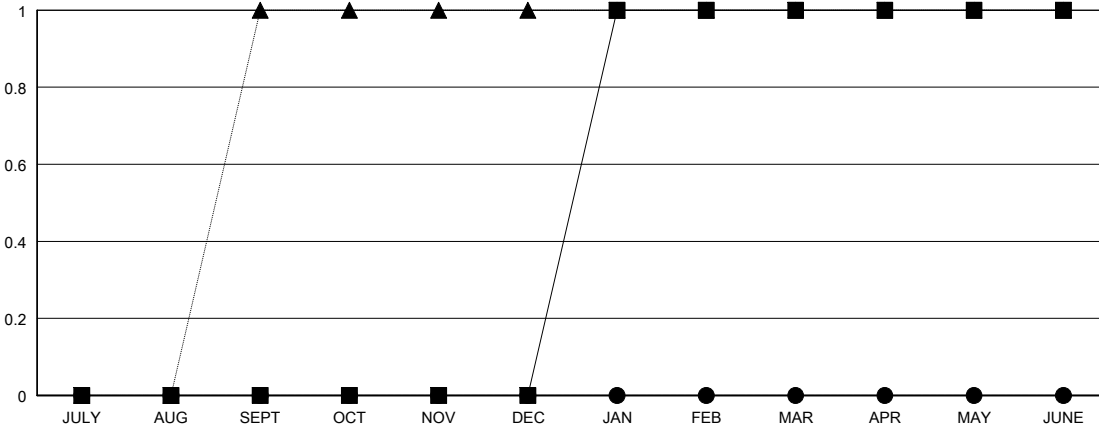
LOCATION MISSOURI

GMT CA

Clubs			
RESULTS FOR 2018-2019			
QUARTER	NEW CLUB GOAL	NEW CLUBS	DROPPED CLUBS
JULY/AUG/SEPT	0	0	0
OCT/NOV/DEC	0	0	0
JAN/FEB/MAR	1	0	0
APR/MAY/JUNE	0	0	0

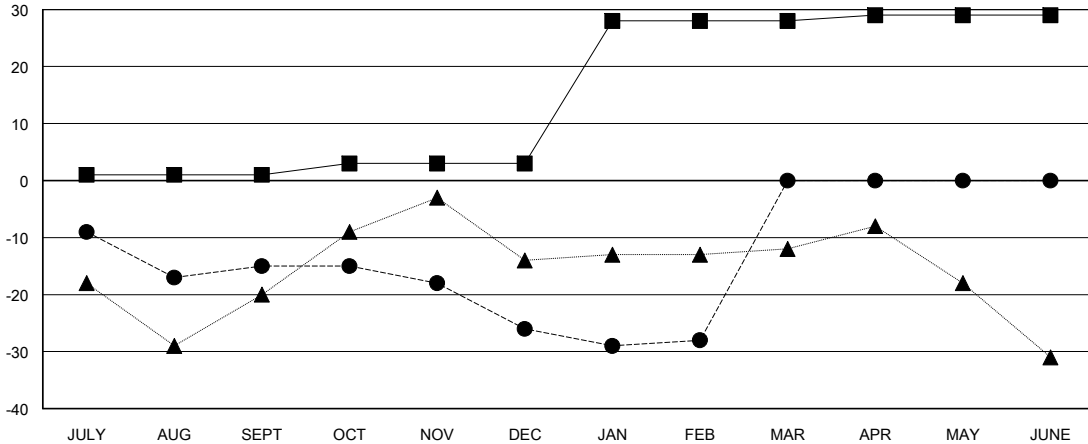
Members			
RESULTS FOR 2018-2019			
QUARTER	MEMBER GROWTH NET GOAL	MEMBER GROWTH ACTUAL	DROPPED MEMBERS ACTUAL (including transfers)
JULY/AUG/SEPT	1	18	30
OCT/NOV/DEC	2	36	43
JAN/FEB/MAR	25	13	13
APR/MAY/JUNE	1	0	0

GOALS AND ACTUAL NEW CLUBS CUMULATIVE



- - CURRENT YEAR GOALS FOR NEW CLUBS
- - CURRENT YEAR ACTUAL NEW CLUBS
- ▲ - LAST YEAR ACTUAL NEW CLUBS

GOALS AND ACTUAL MEMBERS CUMULATIVE



- - MEMBER GROWTH NET GOAL
- - MEMBER GROWTH ACTUAL
- ▲ - LAST YEAR MEMBERSHIP ACTUAL

DROPPED CLUBS: 0	18 CLUBS OF 59 ADDED 1 OR MORE NEW MEMBERS	<u>GENDER DISTRIBUTION</u> MALE 987 (75.81%) FEMALE 315 (24.19%) Women Percentage Fiscal Year Goal: 22%
<u>DROPPED MEMBERS</u> DECEASED 16 CLUB CANCELLED 0 OTHER 70 TOTAL 86	<a href="#">CLICK HERE FOR CUMULATIVE MEMBERSHIP DATA</a>	TOTAL FAMILY UNIT MEMBERS 122 FAMILY MEMBERS PAYING HALF DUES 63